

HOMYZE

YOUR MAJOR
WORKS AND
PROJECTS
PARTNER





A professional solution to
managing larger projects

THE HOMYZE SOLUTION



Budgeting



Project scope &
specification



Value engineering



Professional Team
Appointments



Cost consultancy



Health And Safety
Management



Act as Principle
Contractor



Specialist Contractor
Engagement



Project Management



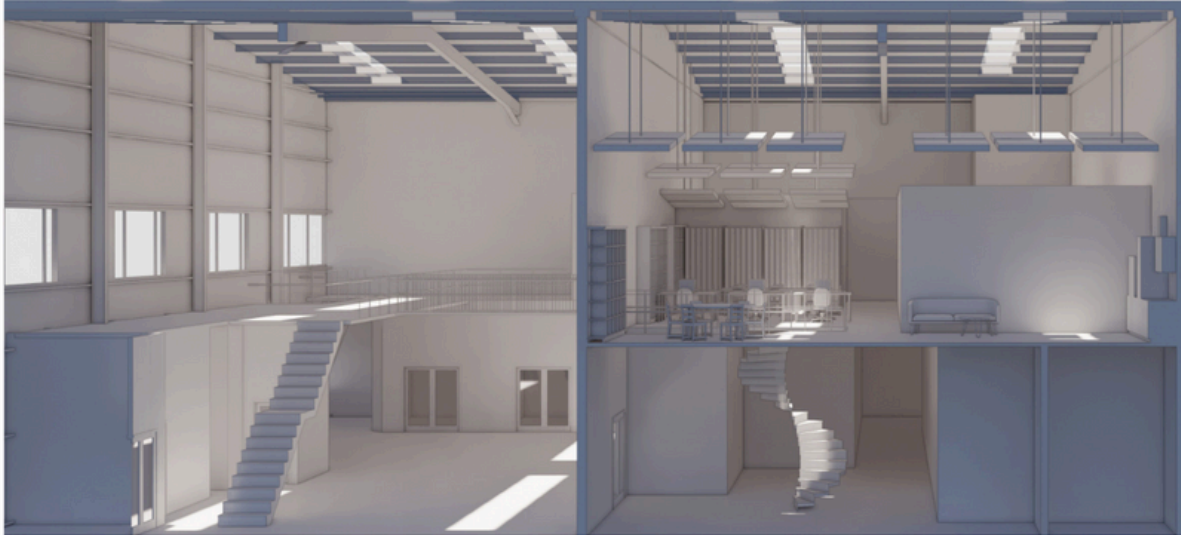
Ongoing PPM Works

CASE STUDY

Commercial Office Fit Out

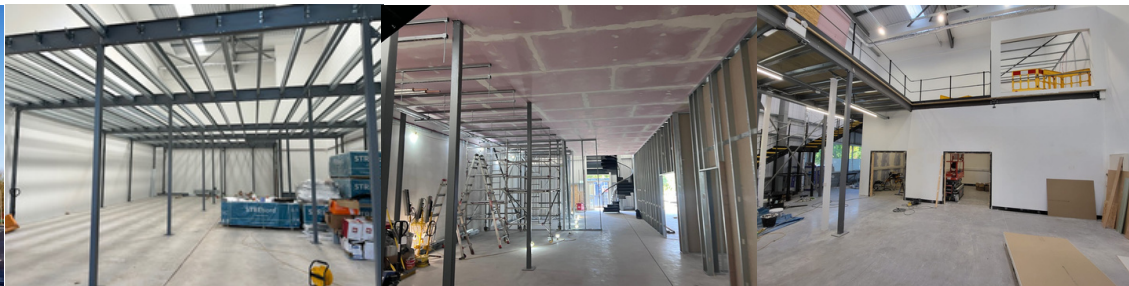
MAGDRIVE, DIDCOT

A 10,000 sqft CAT A office space within an industrial science park. Homyze were instructed design and build a high spec laboratory and office space to a budget of £1.5m.



Scope

- Phase 1 = 3 month programme and Phase 2 = 6 month programme
- £1.5m value
- Link two office units to create one space.
- Installation of a 5,000 sqft mezzanine to provide additional floor area.
- Installation of specialist laboratories and clean rooms to replicate space environments
- New bathrooms and kitchens through out
- Brand new mechanical and electrical installation, including HVAC, and lifts
- Joinery including doors, storage, and desks
- Floor and wall finishes throughout
- Feature spiral staircase & link bridge
- Glazed meeting rooms



Outcome

Project split up into two phase. Phase 1, Unit 4 fit out complete and phase 2, Unit 3 due to be handed over in December 2024. Phase 1. Works were completed over a a tight 3 month programme and to budget. The result was a truly multi-faceted work space. With a tight budget we were able to provide the client with a work space that has break out areas, meeting rooms, open plan offices and workshops. Phase 2, includes a ground breaking science co-working and laboratory space, with architectural features. The key to the success of this project and others was taking time to fully understand the client brief, tailoring our approach and communication through every stage of the project.

CASE STUDY

Commercial Office Fit Out

SIXT, SLOUGH

A 2,500 sqft CAT B office space within an existing office block. Homyze were instructed to fit out existing office floor to a budget of £80k.

Scope

- 4 week programme
- £80k value
- Creation of new meeting rooms,
- New Joinery throughout
- Adaptations to existing services
- Glazed meeting rooms
- New Kitchens
- New carpet throughout
- Decorations



Outcome

Works were completed within a tight 2 month programme and to budget. The result was a bright new clean work space, that was tailored to the client's brand requirements. With a tight budget we were able to provide the client with a work space that has break out areas, meeting rooms and open plan offices. All done to a high spec!

CASE STUDY

Multiple Flat Refurbishments

FRENCH EMBASSY, LONDON

Homyze were instructed to refurbish 13 flats within a tight 6 week window, ready for new tenant's to move in.

Scope

- 6 week delivery Programme
- £150k value
- 13no 2/3 bed apartments
- New bathrooms
- New Decorations through out
- EICRs and remedials
- New carpets
- Sash window restoration
- New secondary glazing through out



Outcome

Due to the nature of the French August shutdown Homyze had just 6 weeks to complete all works to 13 flats ready for tenants to move in. We delivered all 13 apartments on time to a very high standard ready for the new tenants. Client inspections and instructions were live for the duration of the project, meaning Homyze had to remain flexible to adapt to onsite changes whilst still delivering on time.

University Window upgrades and Reception refurbishment

ICMP,LONDON

Homyze were instructed to carry out major exterior and internal works to the Kilburn Campus of The Institute Of Contemporary Music Performance. Works involved replacing 50no windows and upgrading the whole reception area during the holiday period of 4 weeks,

Scope

- £140k in value
- 4 weeks to deliver.
- Full external scaffold envelope
- 50 new UPVC windows replaced
- Existing main reception stripped back to shell
- New Joinery throughout, include a new reception desk
- New floor finishes
- Adaptations to existing services
- New AC
- Glazed entrance door
- Decorations throughout



Outcome

Works were all completed within a tight timeframe whilst the university was closed over the easter holiday. The site sat on a busy main road, providing the added complexity of working with the council and general public to erect scaffold and change windows safely. The reception works were completed within a week, working nights to ensure delivery on time.

CASE STUDY

Major Decoration Works

ARUNDEL SQUARE, LONDON



Homyze were instructed to carry out decoration upgrade works to a prime development in Islington. Involved redecoration to tenant apartments and common parts.

BUTE STREET, LONDON SW7



Undertook full decoration works three high end residential flats in four week programme.

Get in touch

E HELLO@HOMYZE.COM

W WWW.HOMYZE.COM

T 0203 808 5466

211 WESTBOURNE STUDIOS
242 ACKLAM ROAD
LONDON W10 5JJ